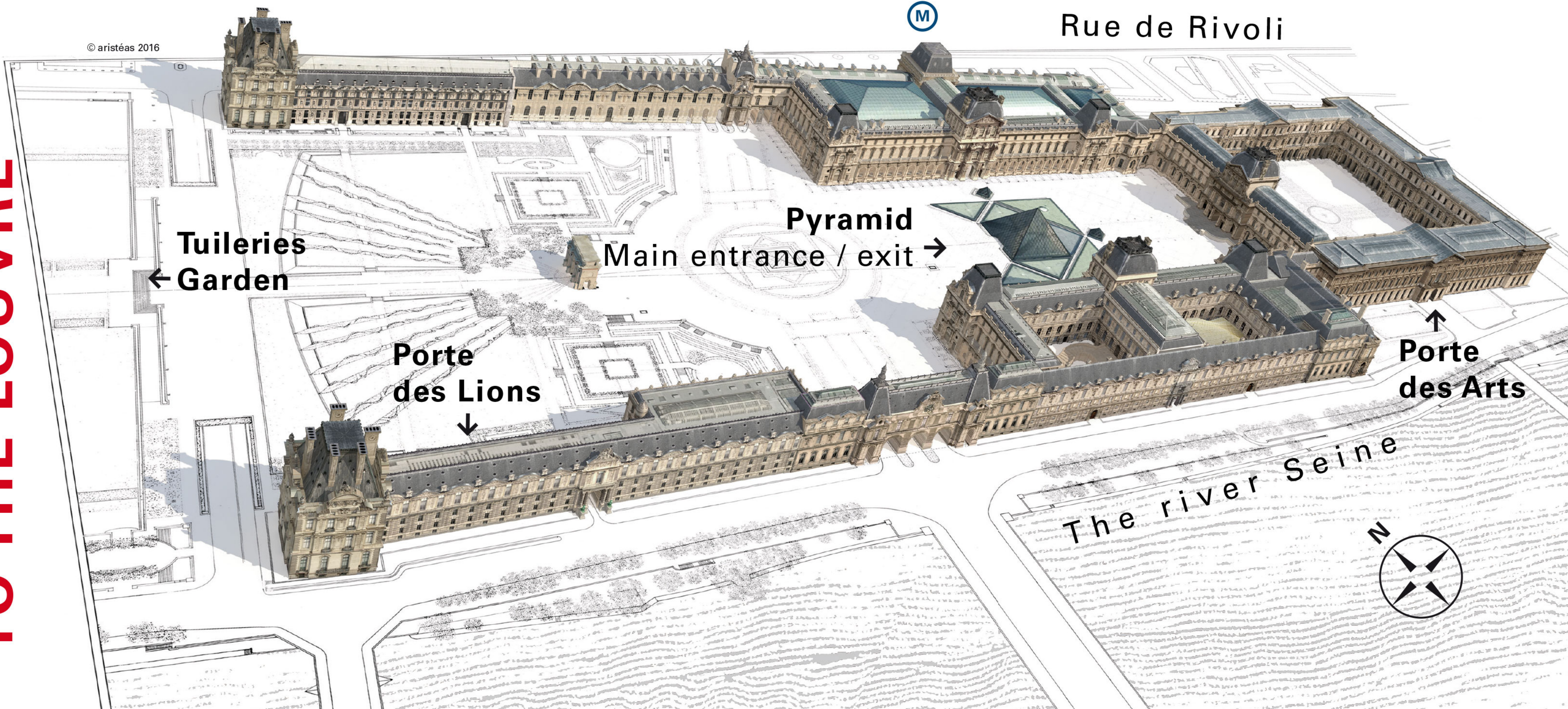


**WELCOME
TO THE LOUVRE**

© aristéas 2016



Rue de Rivoli

Tuileries
← Garden

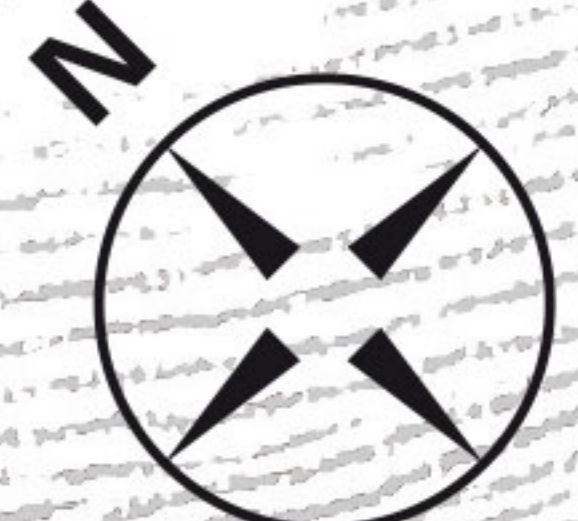
Pyramid

Main entrance / exit →

Porte
des Lions
↓

↑
Porte
des Arts

The river Seine



THE LOUVRE AND ITS COLLECTIONS

Near Eastern Antiquities (7500 BC–AD 500)

One of the world's oldest centres of great civilisations is presented here with archaeological finds including precious objects, statues, inscribed tablets and architectural decorations from palaces and temples. The display is organised by region (modern Iran, Iraq, Syria, Turkey, etc.).

Level 0 – Richelieu and Sully wings

Egyptian Antiquities (4000–30 BC)

Level 0: a theme-based display of objects from the Nile Valley, between Egypt and Sudan, with sculptures, paintings, vestiges of tombs and temples, religious and everyday objects.

Level 1: a chronological display, from late prehistory to the Roman period.

Levels 0 and 1 – Sully wing

Greek Antiquities (6500–30 BC)

Levels -1 and 0: the development of Greek art, presented by period from late prehistory to the Roman conquest. Level 1: a presentation of the techniques and materials used in the Greek and Roman world (bronze, precious metals, ceramic, glass).

Levels -1, 0 and 1 – Denon and Sully wings

Roman Antiquities (100 BC–AD 500)

Level 0: a presentation by period from the late Roman Republic to the end of the Roman Empire. The galleries surround the courtyard of Anne of Austria, Queen of France (1615–1643).

Level 1: a presentation of the techniques and materials used in the Greek and Roman world.

Levels 0 and 1 – Denon and Sully wings

Italic and Etruscan Antiquities (900–200 BC)

Sculptures, vases, sarcophagi, weapons, jewellery, accessories and furniture, mostly found in tombs, illustrate the civilisations that lived in what is now Italy during the 1st millennium BC, before the Romans.

Level 0 – Denon wing

Near Eastern and Egyptian Art (30 BC–AD 1800)

Mosaics, reconstructed church decorations, painted portraits, terracottas and precious objects reflect Eastern Mediterranean art from Roman times to the Islamic conquest. The presentation of art from the Christian communities in Egypt and Sudan continues into the medieval and modern periods.

Levels -2 and -1 – Denon wing

Islamic Art (700–1800)

Ceramics, miniatures, glassware, wood panelling, carpets and ceremonial weapons are presented by period from the foundation of Islam to the 18th century. They reflect the splendour of a civilisation that extended from Spain to India.

Levels -2 and -1 – Denon wing

Sculptures / France (500–1850)

The Marly and Puget courtyards present outdoor statues dating from the 17th to 19th centuries. The surrounding rooms house a display arranged by period from the Middle Ages to the Romantic era, featuring great French sculptors such as Goujon, Coustou, Pigalle, Houdon and Barye.

Levels -1 and 0 – Richelieu wing

Sculptures / Europe (500–1850)

With works by Donatello, Michelangelo and Canova, the display of European sculpture is organised by region. Italian and Northern European sculptures are presented by period, on two levels; one room is devoted to Spanish sculpture.

Levels -1 and 0 – Denon wing

Paintings / France (1350–1850)

The world's most comprehensive collection of French painting includes works by Poussin, Georges de La Tour, Watteau, Fragonard, Ingres and Corot, presented by period. Level 1 of the Denon wing displays large-format 19th-century paintings (Jacques-Louis David, Delacroix...).

Level 2 – Richelieu and Sully wings / Level 1 – Denon wing



Paintings / Northern Europe (1350–1850)

Major works by artists such as Van Eyck, Brueghel, Rubens, Van Dyck, Rembrandt and Vermeer are displayed by period and arranged according to artistic centre: Flanders, Germany, the Netherlands, etc.

Level 2 – Richelieu wing



Paintings / Italy (1250–1800)

The Italian painting collection, one of the finest in the world, includes major works by artists such as Fra Angelico, Botticelli, Leonardo da Vinci, Raphael, Titian and Caravaggio. They are arranged by period and artistic centre in the Salon Carré, Grande Galerie and nearby rooms.

Level 1 – Denon wing



Paintings / Spain (1400–1850)

The Spanish collection, featuring works by El Greco, Zurbarán, Ribera, Murillo and Goya, is presented by period from the 15th to the 19th century. Large-format paintings are in the central gallery.

Level 1 – Denon wing



Paintings / Great Britain / United States (1750–1850)

The British and American collection, essentially portraits and landscapes, features works by artists including Gainsborough, West, Raeburn, Lawrence, Turner and Constable.

Level 1 – Denon wing



Decorative Arts / Europe (500–1850)

Precious objects, jewellery, weapons, tapestry, glassware, ceramics, painted enamels, bronzes, Crown jewels and gems, gold and silverware, furniture and reconstructed interiors, presented by period from the Middle Ages to the 1850s, reflect the creativity and skill of decorative artists, stimulated by royal commissions.

Level 1 – Richelieu, Sully and Denon wings



Drawings, Prints and Engravings / Europe (1350–1850)

The Louvre holds the world's finest collection of drawings, engravings, prints, pastels and watercolours by renowned European artists. These light-sensitive works can only be presented for short periods and in temporary exhibitions.

Level -1 – Sully wing (Rotonde Sully)



Arts of Africa, Asia, Oceania and the Americas

(700 BC–AD 1900)

About a hundred major works from the Musée du Quai Branly are presented by region. These masterpieces represent the non-European civilisations of pre-Columbian America, Africa, Southeast Asia and Oceania.

Level 0 – Denon wing

The Pavillon de l'Horloge: discover the Louvre

Discover the Louvre with this introductory presentation. See how the original medieval fortress became a palace, then a museum. On Level 1, selected works give a first glimpse into the Louvre's vast collections, and Level 2 presents the museum's latest news.

This discovery tour of the Musée du Louvre bears the name of HRH Zayed bin Sultan Al Nahyan, founder of the United Arab Emirates, in recognition of the latter's exceptional generosity to the Louvre.

Levels -1, 1 and 2 – Sully wing

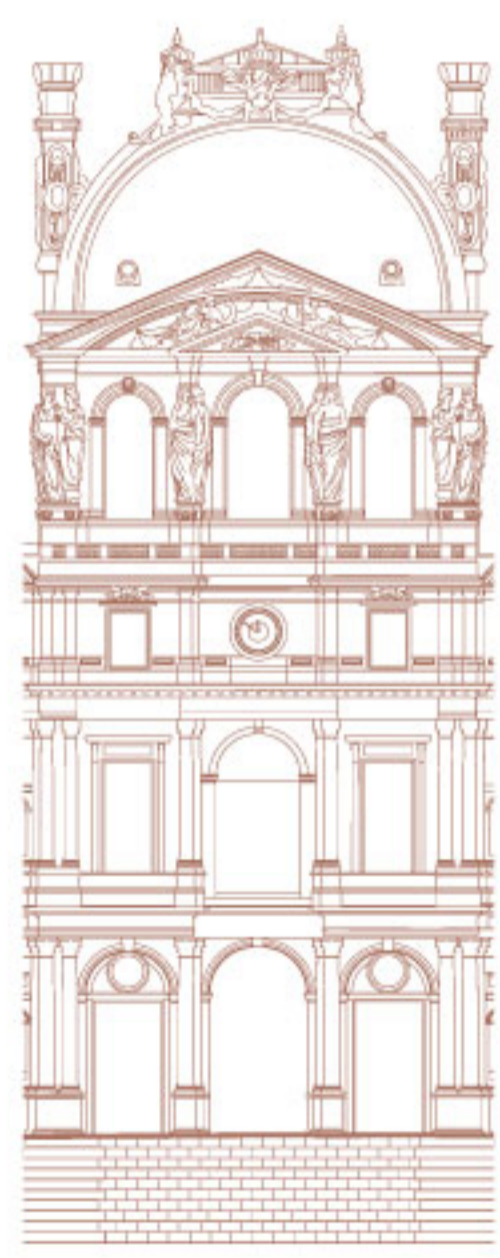
The Petite Galerie

Learn to enjoy and understand art, its history and its techniques. A new theme each year can be a starting point for an exploration of the whole museum!

Until 3 July 2017, 'The Body in Movement: Dance and the Museum'.

September 2017–July 2018, 'The Theatre of Power'.

Level -1 – Richelieu wing



Petite
Galerie



PRACTICAL INFORMATION

Opening hours

Museum

Open daily except Tuesdays from 9 a.m. to 6 p.m. and until 9:45 p.m. on Wednesdays and Fridays.

Rooms begin closing at 5:30 p.m., and at 9:30 p.m. on Wednesdays and Fridays.

Due to the size of the museum's collections and its day-to-day agenda, certain rooms may be closed.

Information: +33 (0)1 40 20 53 17

Dominique-Vivant Denon Research Centre (Porte des Arts)

A research and resource centre, open to individuals on Wednesdays, Thursdays and Fridays, 1 p.m.–5 p.m.

Viewing room for prints and drawings (Porte des Lions)

From Monday to Friday from 1 p.m. to 6 p.m., by prior request.

Contact: cabinet-des-dessins@louvre.fr

📖 Bookshops – museum shops

The main book and gift shop in the Allée du Grand Louvre is open on Mondays, Thursdays, Saturdays and Sundays until 7 p.m. and on Wednesdays and Fridays until 9:45 p.m.

☕ | 🍴 | Cafés and restaurant

'Paul', a French-style bakery; the 'Angelina' tea room (with terrace);

a restaurant with traditional French cuisine;

cafeterias, takeaways and a café (with terrace).



Download the free App 'My Visit to the Louvre'.

SUPPORT THE LOUVRE

Support the activities of the world's greatest museum by making a donation from your smartphone to www.donate.louvre.fr

Thank you for your generosity!

American Friends of the Louvre – a not-for-profit public charity – was founded to strengthen ties between the Louvre and its American public.

For more information on individual membership programmes or on how to make a gift, go to: www.aflouvre.org.

American Friends of the Louvre gratefully acknowledges the generous support of its corporate members (corporate founders: Air France, Sotheby's; corporate contributor: The Gustavo Posse Foundation).

Photo credits:

- Level 2: © RMN - Grand Palais (Musée du Louvre) / Tony Querrec – © Musée du Louvre, dist. RMN - Grand Palais / Angèle Dequier
- Level 1: © Musée du Louvre / Hervé Lewandowski – © 2015 Musée du Louvre / Christian Décamps – © 2007 Musée du Louvre / Angèle Dequier
- Level 0: © Musée du Louvre, dist. RMN - Grand Palais / Raphaël Chipault – © Musée du Louvre, dist. RMN - Grand Palais / Thierry Ollivier – © musée du quai Branly, Dist. RMN-Grand Palais
- Level -1: © Musée du Louvre, dist. RMN - Grand Palais / Raphaël Chipault
- Level -2: © Musée du Louvre / Michel Denancé

Graphic design: Museum Gallery Interpretation Subdepartment / Graphic and Digital Interpretation Division

Printing: Technigraphic 07 - 2016

www.louvre.fr



EXTEND YOUR VISIT

The Carrousel and Tuileries gardens



© Musée du Louvre, dist. RMN - Grand Palais / Christophe Fouin

The Carrousel Garden, between the wings of the Louvre, is laid out around a Napoleonic triumphal arch. Beyond it is the famous Tuileries Garden, a masterpiece of park design with flowerbeds and shady groves. The two gardens are like an open-air sculpture museum



Admission free

Open 7:30 a.m.–7:30 p.m. from 28 September to the last Saturday in March; 7 a.m.–9 p.m. in April, May and September; 7 a.m.–11 p.m. from June to August.

The Musée Eugène-Delacroix



© Musée du Louvre / Antoine Mongodin

Across the river Seine, at a 15-minute walk from the Louvre, visit the apartment, studio and garden where the painter Eugène Delacroix spent the last years of his life.

The museum displays artworks, letters and memorabilia relating to Delacroix.

Admission free for a same-day visit on presentation of the Louvre admission ticket.

6, rue de Furstenberg, 75006

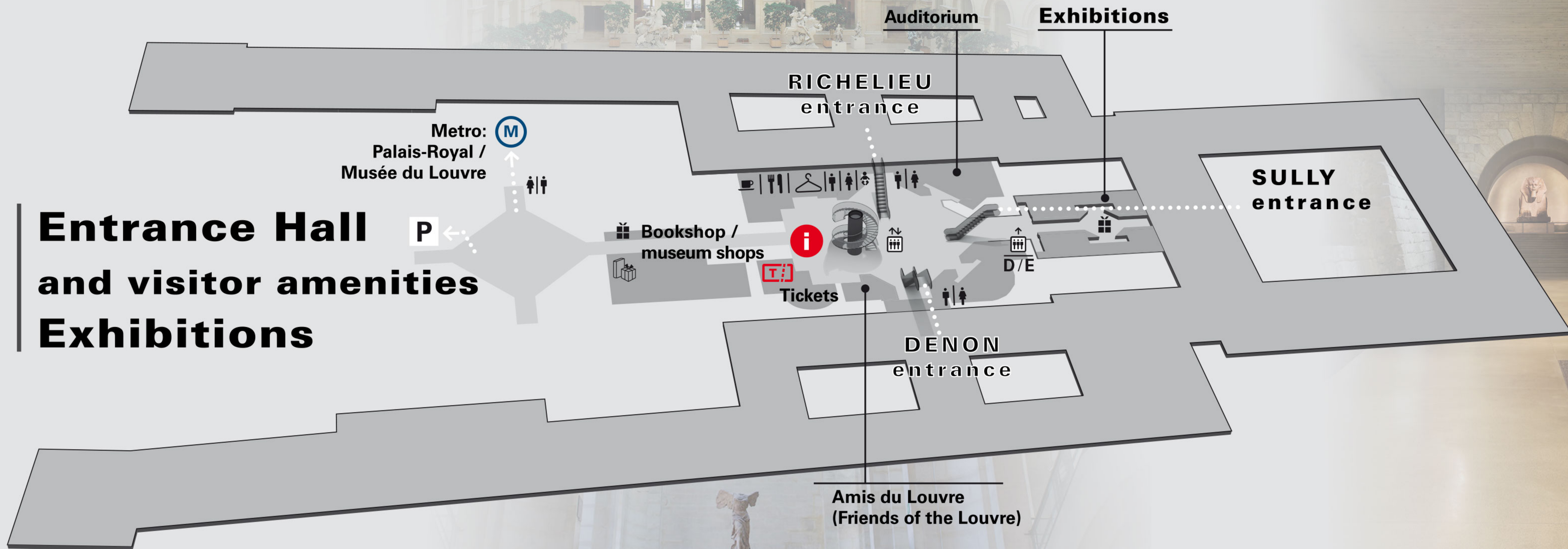
 95 or 39

Open 9 a.m.–5:30 p.m. daily except Tuesdays, 1 January, 1 May and 25 December.

RICHÉLIEU

-2

Entrance Hall and visitor amenities Exhibitions



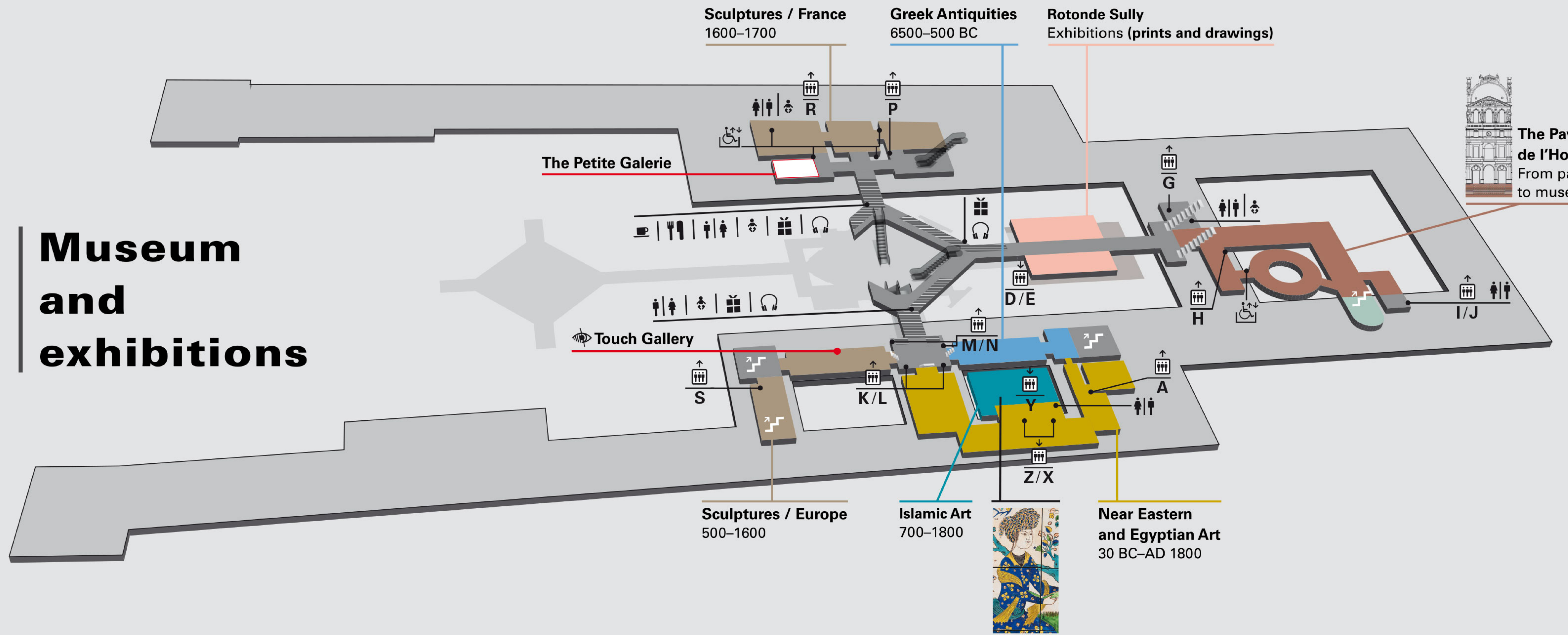
S
U
L
L
Y

DENON

R I C H E L I E U

-1

Museum and exhibitions



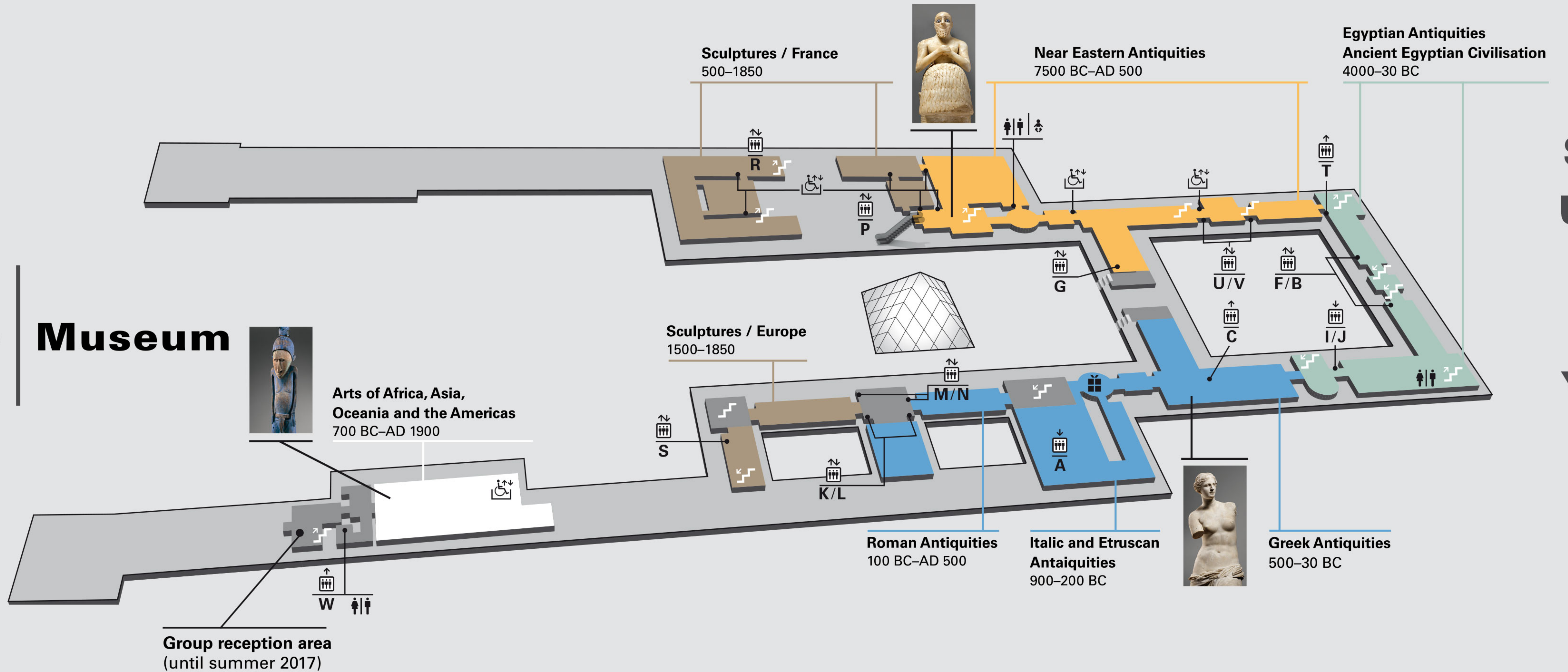
S
U
L
L
Y

D E N O N

R I C H E L I E U

O Museum

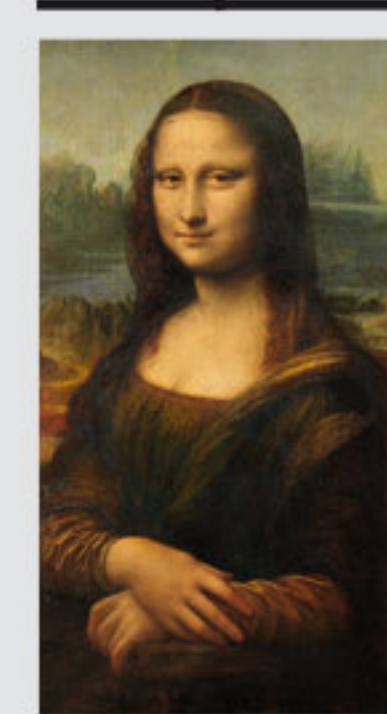
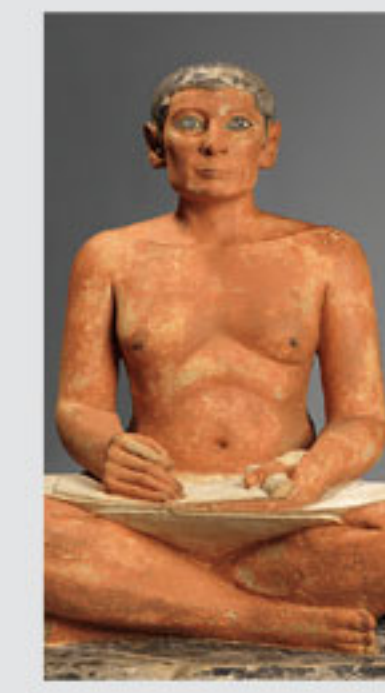
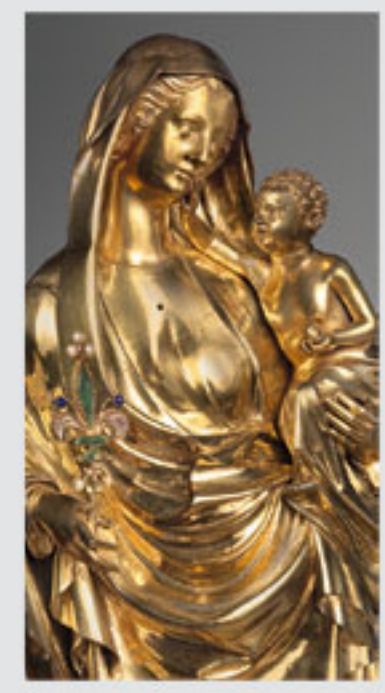
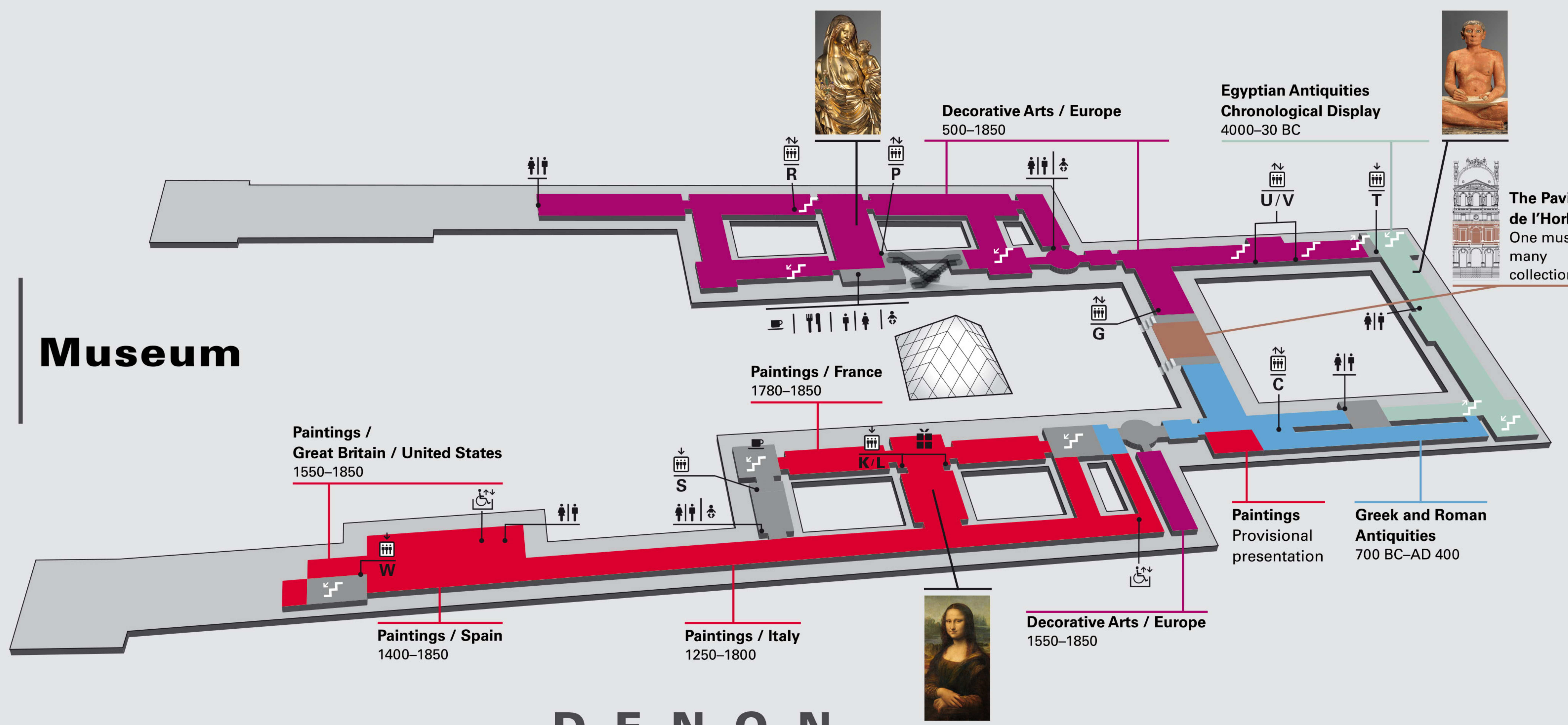
S U L L Y



D E N O N

R I C H E L I E U

1 Museum

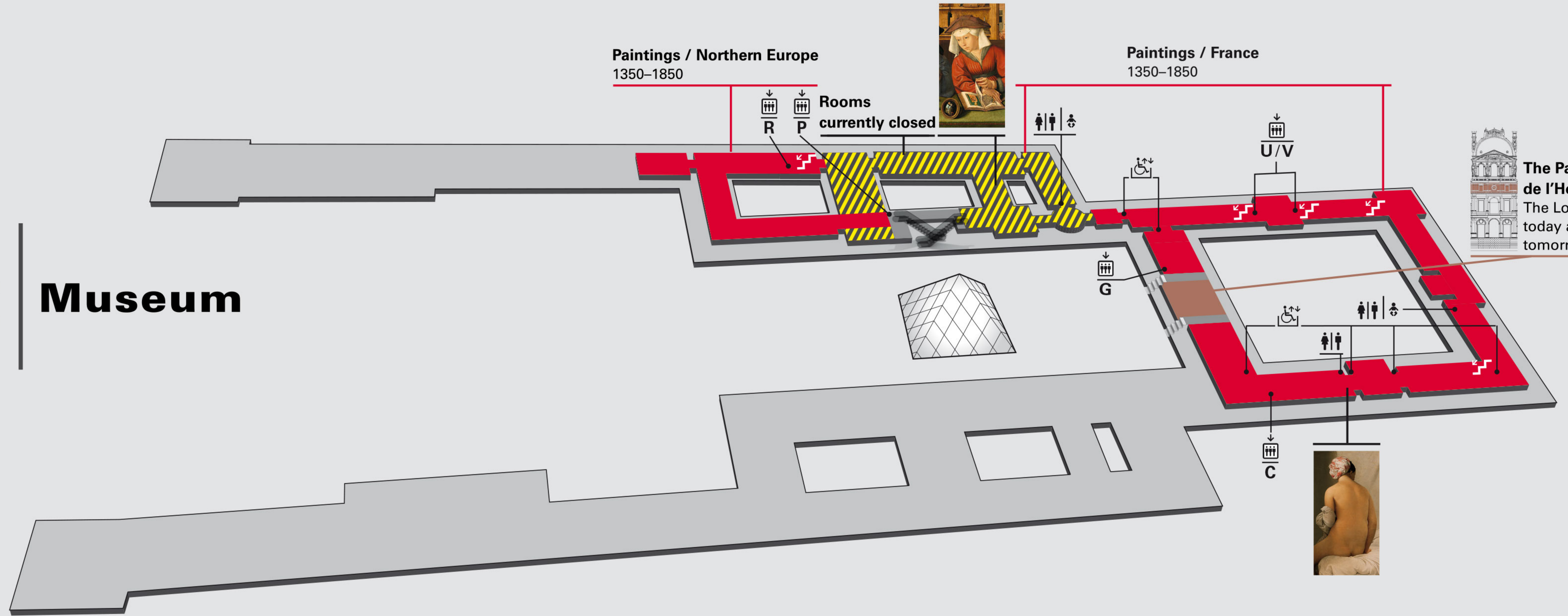


S
U
L
L
Y

D E N O N

R I C H E L I E U

2 Museum



The Pavillon de l'Horloge
The Louvre today and tomorrow

S
U
L
L
Y